



# UNLIMITED CREATION

## APPLICATION INSTRUCTIONS

# MetalFlex

Light, very stretchable and with a beautiful metal effect.  
MetalFlex brings you an excellent 40°C washing fastness.

### FEATURES:



**PU  
metalized**



**50µ**



**Cotton, polyester,  
blended fabrics..**  
Less suitable for nylon  
and other coated textiles.



**40°C**  
only mild  
detergents

### CUTTING CONDITIONS:



**Blade  
30 - 45°**



**low/  
medium**



**30 - 40 cm/s**

### TRANSFER CONDITIONS:



**170°C**



**20 s**



**medium/  
high**



**Cold peel**

### ► PACKAGING



49 cm

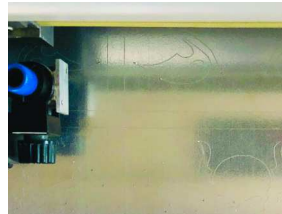
25 m

49 cm

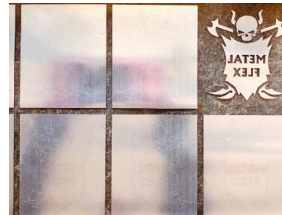
10 m

49 cm

5 m



1. Cut mirrored



2. Weed design



3. Transfer design



4. Remove liner, done !

Store in a cool and dry place; protect against the influence of light when stored. We recommend not to exceed a storage period of 18 months. The technical specifications rest on extensive tests and technical research. Due to the variety of possible influences during refinement, and use, the specifications should be viewed as reference values. We recommend a suitability test on the original material. A legally binding warranty of specific characteristics cannot be derived from our specifications.

**S E F • 110 BD DENIS-PAPIN 53000 LAVAL – FRANCE**  
**TEL. +33 2. 43 53 36 48      FAX +33 2. 43 67 11 78**  
**www.seftextile.com E-mail: contact@sef-france.com**  
**SAS. CAPITAL € 945 000 RCS, LAVAL 304.802.291.00027**

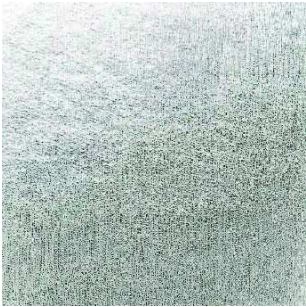




# UNLIMITED CREATION

## AVAILABLE COLORS

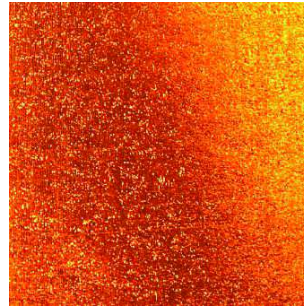
# MetalFlex



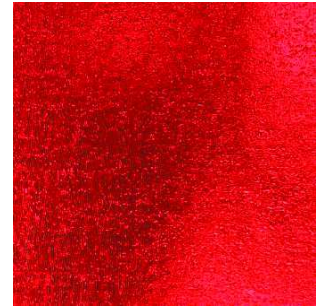
SILVER



GOLD



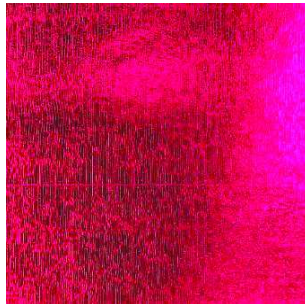
ORANGE COPPER



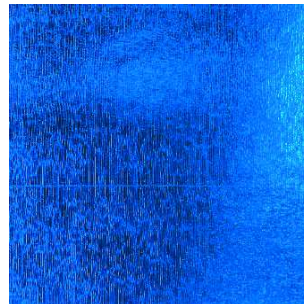
RED



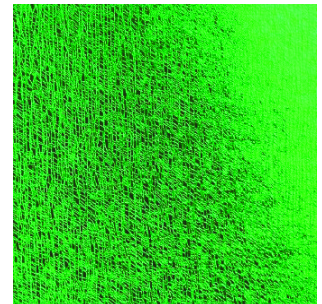
ROSEGOLD



CANDY PINK



BLUE



GREEN



GUN METAL

Store in a cool and dry place; protect against the influence of light when stored. We recommend not to exceed a storage period of 18 months. The technical specifications rest on extensive tests and technical research. Due to the variety of possible influences during refinement, and use, the specifications should be viewed as reference values. We recommend a suitability test on the original material. A legally binding warranty of specific characteristics cannot be derived from our specifications.

SEF • 110 BD DENIS-PAPIN 53000 LAVAL – FRANCE  
TEL. +33 2. 43 53 36 48 FAX +33 2. 43 67 11 78  
www.seftextile.com E-mail: [contact@sef-france.com](mailto:contact@sef-france.com)  
SAS. CAPITAL € 945 000 RCS, LAVAL 304.802.291.00027

